

Chipset Driver Installation Guide

Version: V6.0.1.1002 Update: 20090929

Trademarks

Some of the product names mentioned herein are used for identification purposes only and may be trademarks and/or registered trademarks of their respective owners.

Revision History:

Version	Date	Description
V6.0.1.1002	Feb, 2009	Release

Remark:

The below installation procedure is based on the version v6.0.1.1002 and using Windows XP as an example, the installation procedure might slightly differ depending on the OS installed.

Driver Installation Procedure

Insert the Driver CD into your CD driver prior connected to the system then follow the installation instructions in the Setup Wizard.

Detail instruction as below:

1. You can find the driver list in the attached driver CD, please click the <Windows> in the <Chipset> section. The procedure might slightly differ depending on the OS installed.

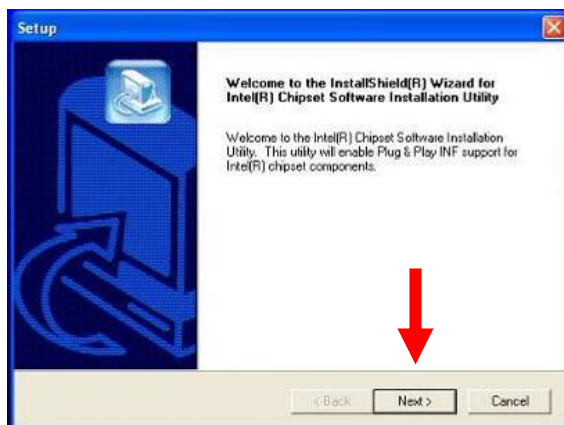
Driver list

Model name (Motherboard)	Function	OS	Note
	Chipset	Windows	
		Win9X, ME	
	USB 2.0	Win2K	
		WinNT4	
	VGA	Win9X, ME	
		Win2K, XP	Version: 14.19.50
		Linux	
	Audio	WinNT4	
		Win9X, ME, 2K, XP	
		Vista	
	Linux		
	Touch Screen auto detect / install program. Use for: <ul style="list-style-type: none"> • ELO • POS Touch • POS Touch-HID • POS Touch+ 	Windows	Read Me
	Touch Screen <ul style="list-style-type: none"> • ELO 	DOS	
		Windows	v463
		WindowsAlpha	v481 (alpha driver)
		Linux	
	Touch Screen <ul style="list-style-type: none"> • POS Touch 	DOS	
		Windows	
		Linux	
	PCI 1000Mb LAN for B78 v2.2 <ul style="list-style-type: none"> • Realtek RTL8110 	DOS	
		Win9X, ME, 2K, XP	
Vista			
	Linux		
MiniPCI IEEE802.11 a/b/g Wireless LAN <ul style="list-style-type: none"> • UNEX CM10 	Win98, ME		
	Win2K, XP		
	Vista		
	Linux		
BIOS flash utility	DOS		
Hardware Monitor	Windows		
Cash Drawer controller test utility (use I/O port 0x4B8)	DOS	With C language source code	
	Windows		
Finger Print Module <ul style="list-style-type: none"> • U4500 	SDK for Windows and Linux		
	Demo and Test program (Windows)	Installation and User Guide	
Magnetic Card Reader			

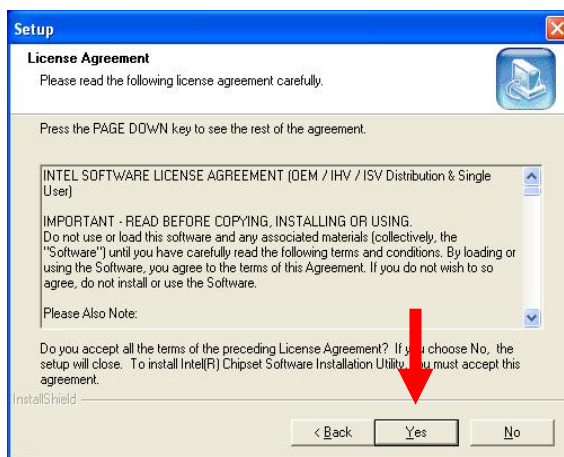
2. After enter the Chipset menu, you will see the file <v6.0.1.1002.exe>, double click to run it.



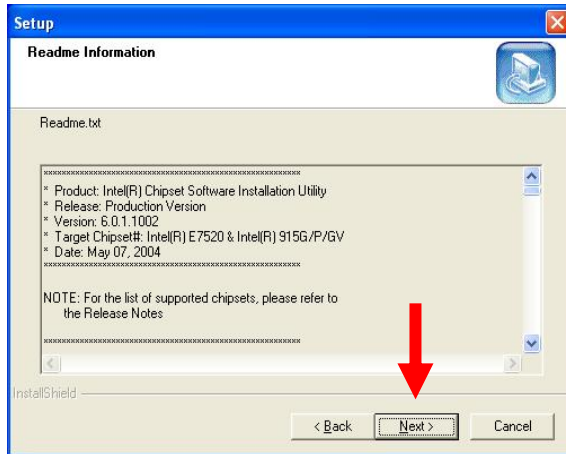
3. Click the <Next> button on the Welcome window.



4. Click the <Yes> button on the License Agreement window.



5. Click the <Next> button on the Readme Information window.



6. Click the <Finish> button and restart your system.

