

VGA Driver Installation Guide

Version: V14.19.50 Update: 20090929

Trademarks

Some of the product names mentioned herein are used for identification purposes only and may be trademarks and/or registered trademarks of their respective owners.

Revision History

Version	Date	Description
V14.19.50	Sep. 2009	Release

Remark:

The below installation procedure is based on the version v14.19.50 and using Windows XP as an example, the installation procedure might slightly differ depending on the OS installed.

Driver Installation Procedure

Insert the Driver CD into your CD driver which is prior connected to the system then follow the installation instructions in the Setup Wizard.

Detail instruction as below:

1. You can find the driver menu in the attached driver CD, please click the <Win2K,XP> in the <VGA> row. The procedure might differ depending on the OS you installed.

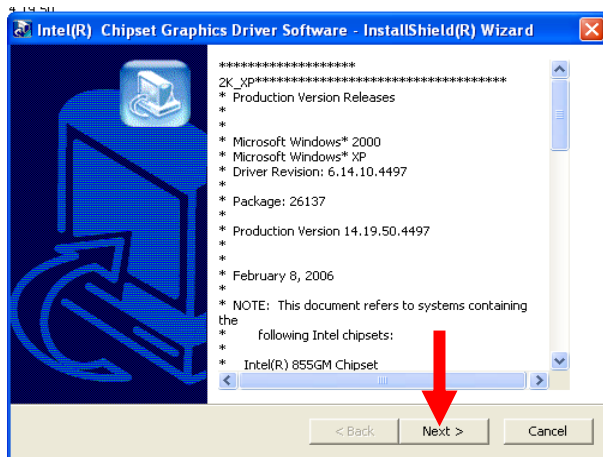
Driver list

Model name (Motherboard)	Function	OS	Note
	Chipset	Windows	
	USB 2.0	Win9X, ME Win2K	
	VGA	WinNT4	
		Win9X, ME	
		Win2K, XP	Version: 14.19.50
		Linux	
		vwin14	
	Audio	Win9X, ME, 2K, XP Vista Linux	
	Touch Screen auto detect / install program. Use for: <ul style="list-style-type: none"> • ELO • POS Touch • POS Touch-HID • POS Touch+ 	Windows	Read Me
	Touch Screen <ul style="list-style-type: none"> • ELO 	DOS Windows Windows\Alpha Linux	v463 v481 (alpha driver)
	Touch Screen <ul style="list-style-type: none"> • POS Touch 	DOS Windows Linux	
	PCI 1000Mb LAN for B78 v2.2 <ul style="list-style-type: none"> • Realtek RTL8110 	DOS Win9X, ME, 2K, XP Vista Linux	
	MiniPCI IEEE802.11 a/b/g Wireless LAN <ul style="list-style-type: none"> • UNEX CM10 	Win98, ME Win2K, XP Vista Linux	
	BIOS flash utility	DOS Windows	
	Hardware Monitor	Windows	
	Cash Drawer controller test utility (use I/O port 0x4B8)	DOS Windows	With C language source code
	Finger Print Module <ul style="list-style-type: none"> • U4500 	SDK for Windows and Linux Demo and Test program (Windows)	Installation and User Guide
	Magnetic Card Reader		

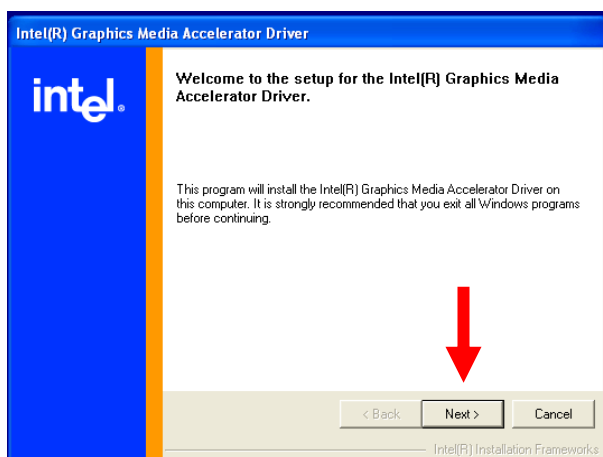
2. After pressing <VGA> link in the <Driver List>, a <File Download – Security Warning> dialog will pop up, please click the <Run> button.



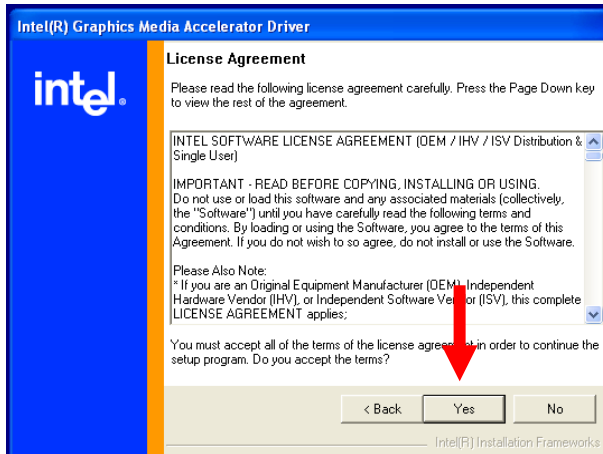
3. Click <Next> to run the InstallShield Wizard.



4. Click the <Next> button on the Intel(R) Graphics Media Accelerator Driver window.



5. Click the <Yes> button on the Intel(R) Graphics Media Accelerator Driver window.



6. Select <Yes, I want to restart my computer now> and click the <Finish> button on the Intel(R) Graphics Media Accelerator Driver window.

