

# GigaLAN Driver Installation Guide

---

Version: V709    Update: 20090929

## Trademarks

Some of the product names mentioned herein are used for identification purposes only and may be trademarks and/or registered trademarks of their respective owners.

## Revision History

Version	Date	Description
V709	Sep. 2009	Release

### Remark:

The below installation procedure is based on the version v709 and using Windows XP as an example, the installation procedure might slightly differ depending on the OS installed.

# Driver Installation Procedure

Insert the Driver CD into your CD driver prior connected to the system then follow the installation instructions in the Setup Wizard.

Detail instruction as below:

1. You can find the driver menu in the attached driver CD, please click the <Win9X, ME,2K, XP> in the <PCI 1000Mb LAN> section. The procedure might slightly differ depending on the OS version installed.

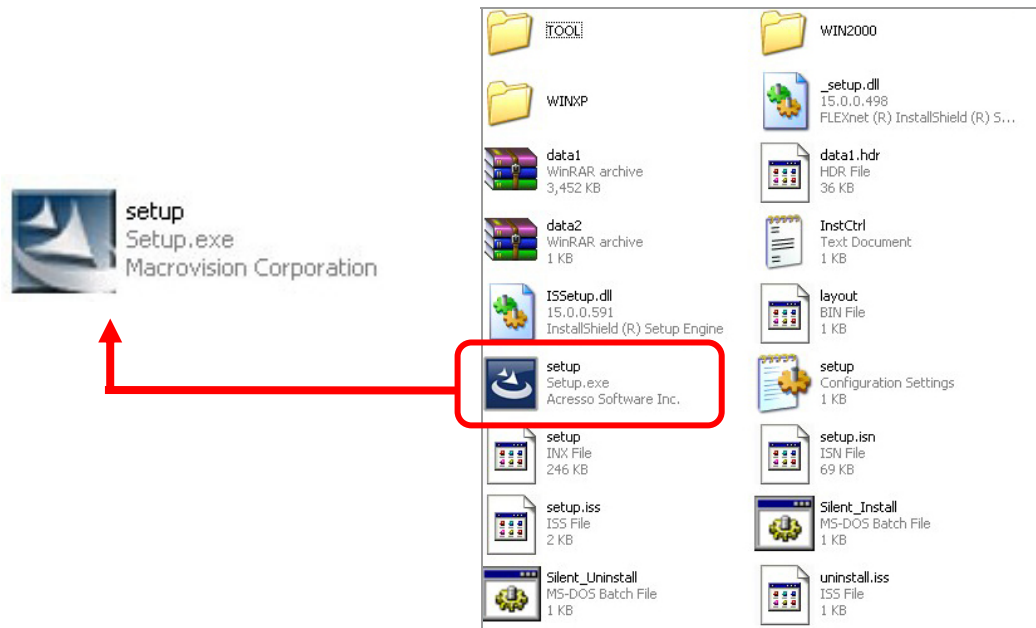
## Driver list

Model name (Motherboard)	Function	OS	Note
	<a href="#">Chipset</a>	<a href="#">Windows</a>	
	<a href="#">USB 2.0</a>	<a href="#">Win9X, ME</a>	
		<a href="#">Win2K</a>	
		<a href="#">WinNT4</a>	
	<a href="#">VGA</a>	<a href="#">Win9X, ME</a>	
		<a href="#">Win2K, XP</a>	Version: 14.19.50
		<a href="#">Linux</a>	
	<a href="#">Audio</a>	<a href="#">WinNT4</a>	
		<a href="#">Win9X, ME, 2K, XP</a>	
		<a href="#">Vista</a>	
		<a href="#">Linux</a>	
		Touch Screen auto detect / install program. Use for: <ul style="list-style-type: none"> <li>• <a href="#">ELO</a></li> <li>• <a href="#">POS Touch</a></li> <li>• <a href="#">POS Touch-HID</a></li> <li>• <a href="#">POS Touch+</a></li> </ul>	<a href="#">Windows</a>
Touch Screen <ul style="list-style-type: none"> <li>• <a href="#">ELO</a></li> </ul>		<a href="#">DOS</a>	
		<a href="#">Windows</a>	v463
		<a href="#">Windows\Alpha</a>	v481 (alpha driver)
Touch Screen <ul style="list-style-type: none"> <li>• <a href="#">POS Touch</a></li> </ul>		<a href="#">Linux</a>	
		<a href="#">DOS</a>	
		<a href="#">Windows</a>	
<b>PCI 1000Mb LAN for B78 v2.2</b> <ul style="list-style-type: none"> <li>• <a href="#">Realtek RTL8110</a></li> </ul>		<a href="#">Linux</a>	
		<a href="#">DOS</a>	
		<a href="#">Win9X, ME, 2K, XP</a>	
	<a href="#">Vista</a>		
MiniPCI IEEE802.11 a/b/g Wireless LAN <ul style="list-style-type: none"> <li>• <a href="#">UNEX CM10</a></li> </ul>	<a href="#">Linux</a>		
	<a href="#">Vista</a>		
	<a href="#">Win2K, XP</a>		
	<a href="#">Win98, ME</a>		
<a href="#">BIOS flash utility</a>	<a href="#">DOS</a>		
Hardware Monitor	<a href="#">Windows</a>		
<a href="#">Cash Drawer controller test utility</a> (use I/O port 0x4B8)	<a href="#">DOS</a>	With C language source code	
Finger Print Module <ul style="list-style-type: none"> <li>• U4500</li> </ul>	<a href="#">Windows</a>		
	<a href="#">SDK for Windows and Linux</a>		
	<a href="#">Demo and Test program (Windows)</a>	<a href="#">Installation and User Guide</a>	
Magnetic Card Reader			

2. Click <v709> folder.



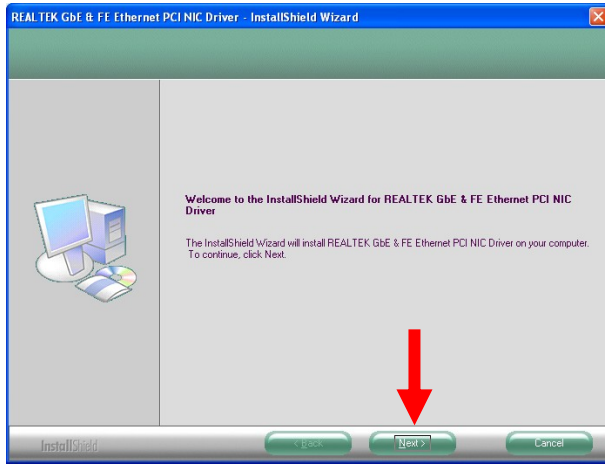
3. Click <setup.exe> to start the installation.



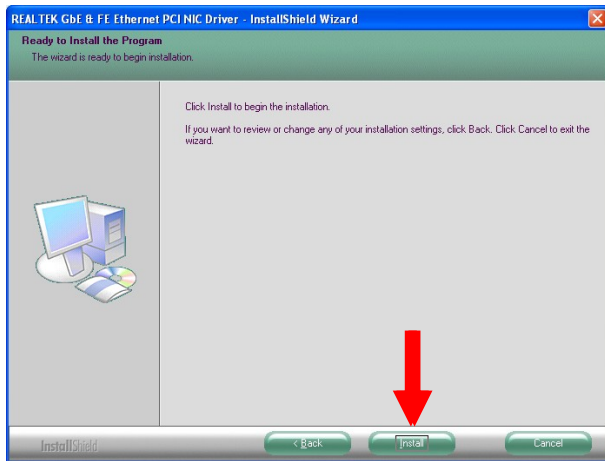
4. Click <Run> when the <Open File – Security Warning> dialog pop up to start the installation.



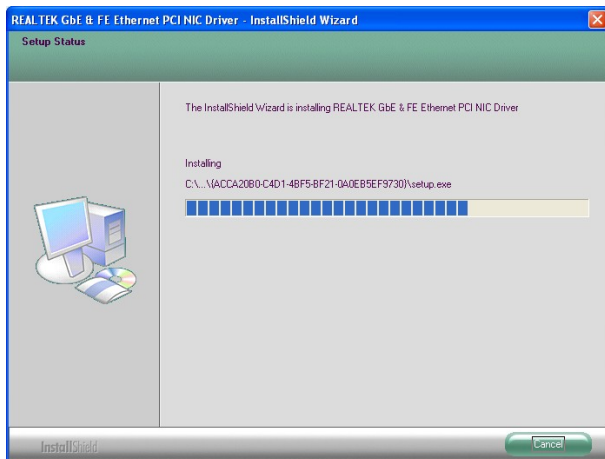
5. Click the <Next> button on the InstallShield Wizard dialog box.



6. Click <Install> button to begin the installation.



7. The installation of REALTEK GbE is processing.



8. The installation is complete, click <Finish>.

