

POS Touch Driver Installation Guide

Version: V3.3.1.30. Update: 20090922

Trademarks

Some of the product names mentioned herein are used for identification purposes only and may be trademarks and/or registered trademarks of their respective owners.

Revision History:

Version	Date	Description
V3.3.1.30.	Aug, 2009	Release

Remark:

The below installation procedure is based on the version v3.3.1.30 and using Windows XP as an example, the installation procedure might slightly differ depending on the OS installed.

Driver Installation Procedure

Insert the Driver CD into your CD driver which is prior connected to the system then follow the installation instructions in the Setup Wizard.

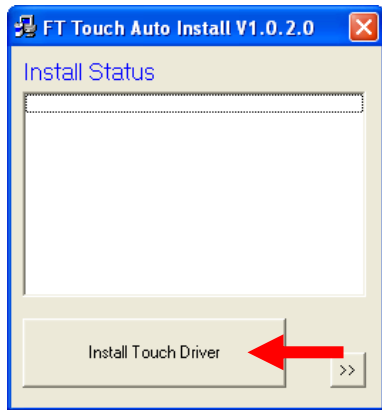
Detail instruction as below:

1. You can find the driver menu in the attached driver CD, please click the <Windows> in the <Touch> section. The procedure might slightly differ depending on the OS version installed.
2. Click the <Windows> to run auto detective program for touch type installed.

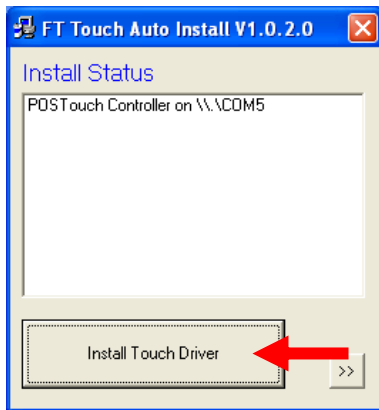
Driver list

Model name (Motherboard)	Function	OS	Note
	Chipset	Windows	Installation Guide
	Intel SATA AHCI	Windows driver	User manual
		Win2K_XP	Installation Guide
	VGA	Win2K_XP	IEGD driver Use for CRT output only
		Vista	
		Linux	
	Audio	Win2K_XP_2003	Installation Guide
	• Realtek HD Codec	Vista	
		Linux	
	Windows XP update	Dual Core CPU	
	Touch Screen auto detect / install program. Use for:	Chipset	
	• ELO	Windows	Read Me
	• POS Touch		
	• POS Touch-HID		
	• POS Touch+		
	Touch Screen	DOS	
	• ELO Touch	Windows	v463 Installation Guide
		WindowsAlpha	v481 (alpha driver)
		Linux	
	Touch Screen	DOS	
	• POSTouch	Windows	Installation Guide
		Linux	
	PCFE 1000MB LAN	DOS	
	• Realtek RTL8111	Win9X_ME_2K_XP	Installation Guide
		Vista	
		Linux	
	Mini PCI-E IEEE802.11 b/g/n Wireless LAN	Win2K_XP	
	• WS32L	Vista	
	• WS33N	WinXP 64bit	
		Vista 64bit	
	BIOS flash utility	DOS	
	Hardware Monitor	Windows	
	Watch Dog Timer (WDT) demo tool	DOS	With C language source code
		Windows	With VB language source code
		Programming guide	
	Cash Drawer controller test utility (use I/O port 0x48C)	DOS	With C language source code
	Finger Print Module	Windows	
	• U4500	SDK for Windows and Linux	
		Demo and Test program (Windows)	Installation and User Guide
	Magnetic Card Reader		
	• S64 series	Windows	Utility
	Magnetic Card Reader		
	• IDMB series	Windows	Utility
	P07303 series 20*2 VFD Customer Display		
	• Demo tool	DOS	User's manual V1.7

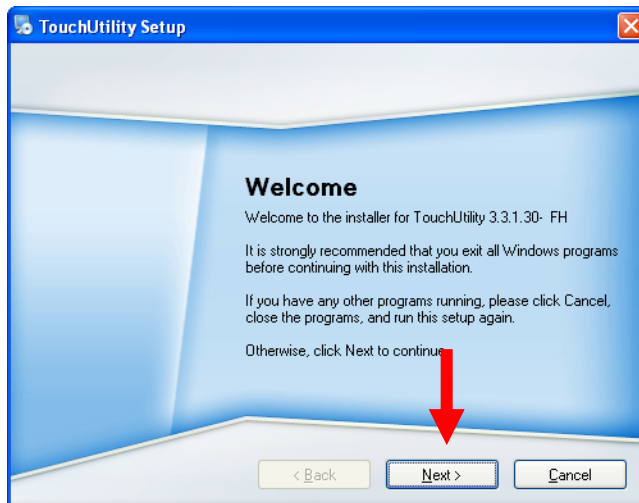
3. To click <Install Touch Driver> to detect the touch type being installed on the system.



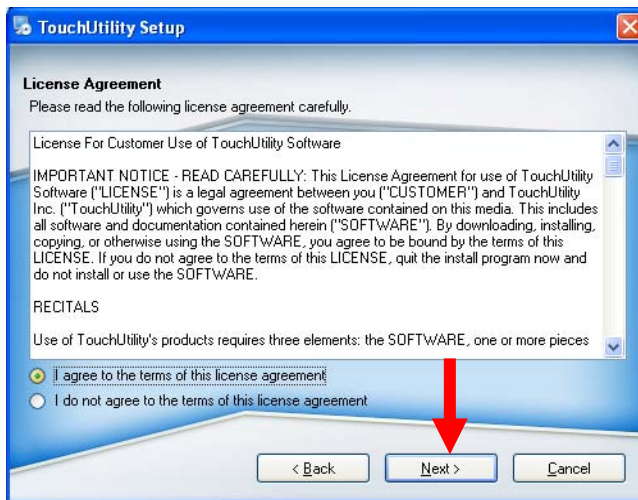
4. After detect the touch type, press <Install Touch Driver> again.



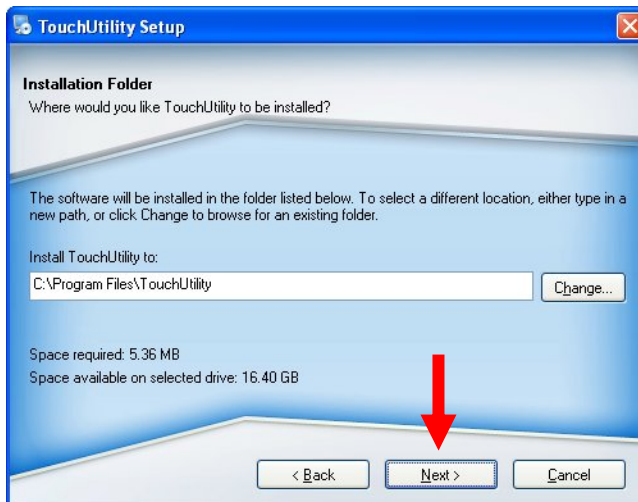
5. Click <Next> to start the setup program of POS touch driver version 3.3.1.30.



6. Select <I agree to the terms of the license agreement> and click <Next>.



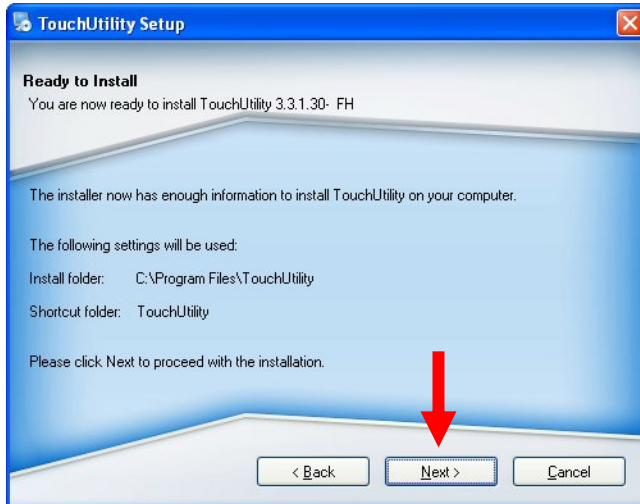
7. Set up a specified folder to install the TouchUtility and click <Next>.



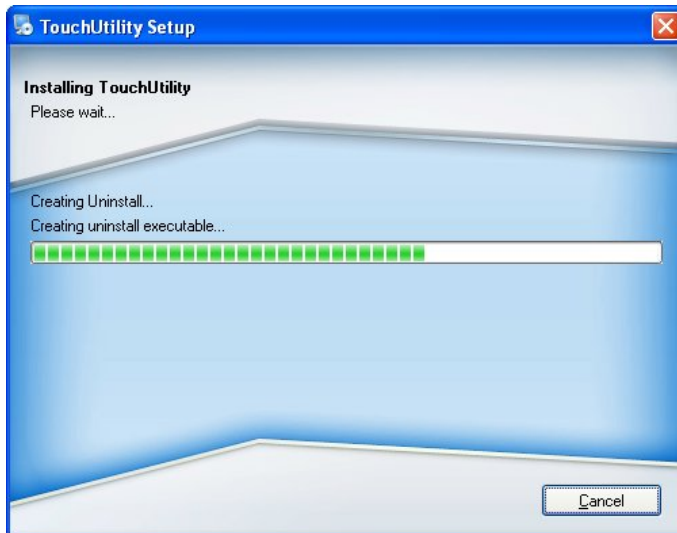
8. Select all options and click <Next>.



9. Click <Next> to start the TouchUtility Setup.



10. TouchUtility Setup is running.



11. To disregard the Software Installation warning and click <Continue Anyway>.



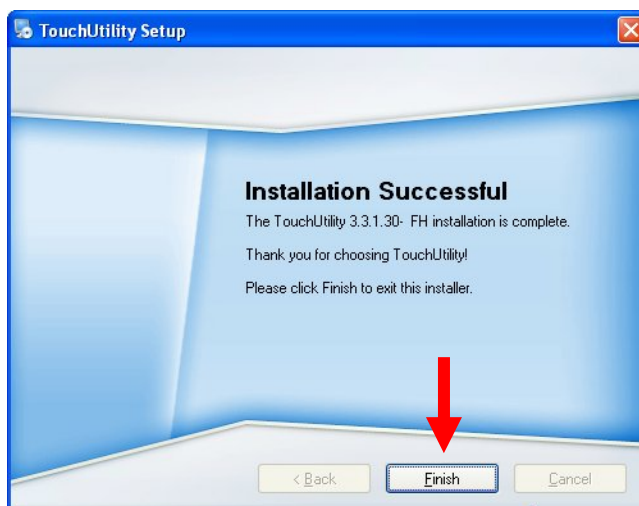
12. To disregard the Hardware Installation warning and click <Continue Anyway>.



13. System Scanning serial port for a touch device is running. The Touch panel is on COM5.



14. TouchUtility Setup installation succeed, click <Finish>.



15. Click <OK> to reboot your computer.

